



Township of King

Schedule 5

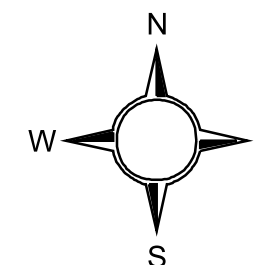
Oak Ridges Moraine Plan Area Key Natural Heritage and Hydrologically Sensitive Features

- Township/Municipal Boundaries
- Existing Roads
- Unopened Road Allowance
- Rail Lines
- Community and Hamlet Plan Areas (refer to relevant plan)
- Oak Ridges Moraine Plan Area/Amendment Boundary
- Key Natural Heritage and/or Hydrologically Sensitive Feature
- Minimum Vegetation Protection Zone (MVPZ)
- Minimum Area of Influence (MAI)

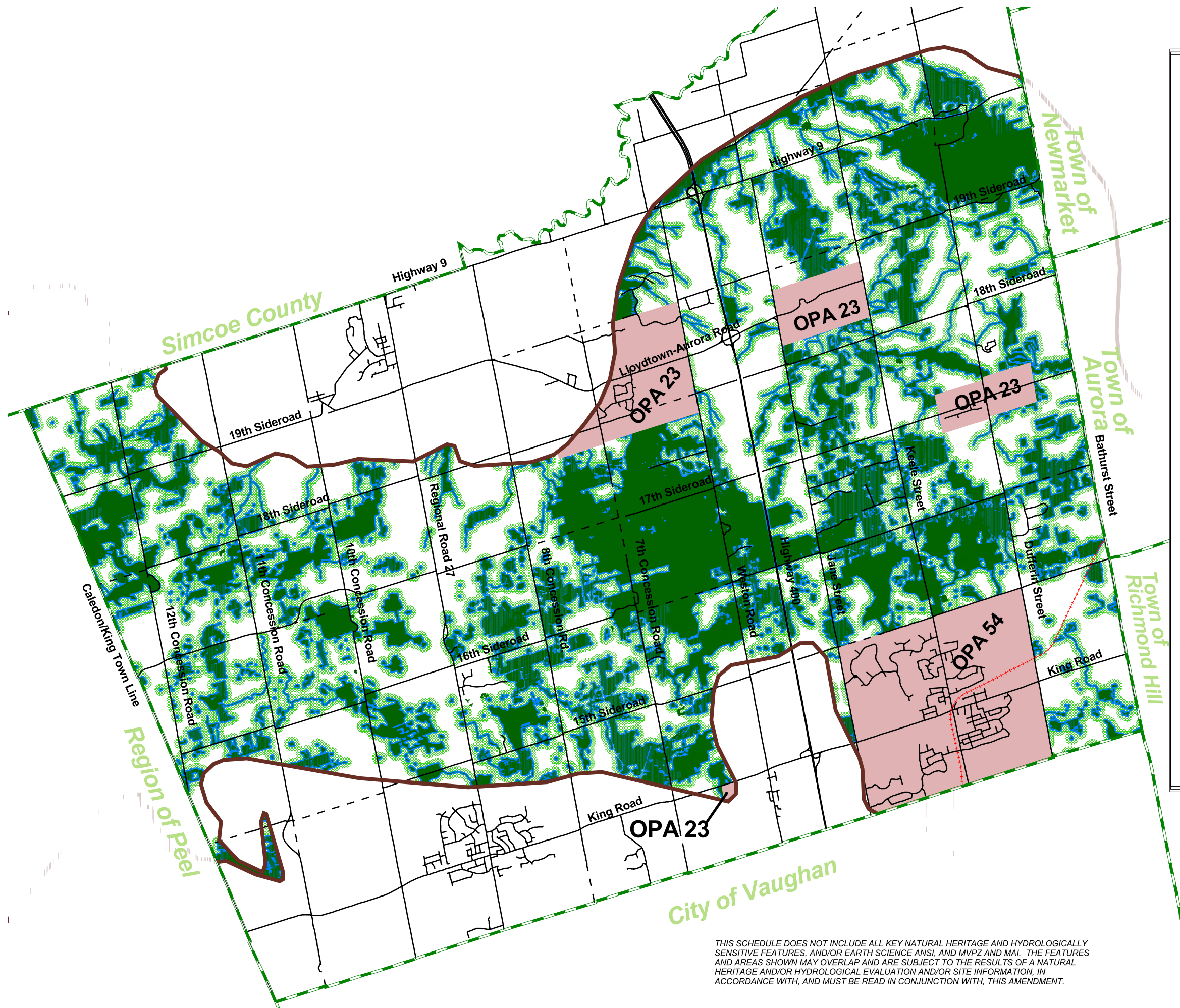
(Source: MMAH, February 2003)



Produced by:
Geomatics Division, Planning and Development Services Department;
Township of King Planning Department
© Copyright, The Regional Municipality of York,
October 2003



0 1000 2000m



THIS SCHEDULE DOES NOT INCLUDE ALL KEY NATURAL HERITAGE AND HYDROLOGICALLY SENSITIVE FEATURES, AND/OR EARTH SCIENCE ANSI, AND MVPZ AND MAI. THE FEATURES AND AREAS SHOWN MAY OVERLAP AND ARE SUBJECT TO THE RESULTS OF A NATURAL HERITAGE AND/OR HYDROLOGICAL EVALUATION AND/OR SITE INFORMATION, IN ACCORDANCE WITH, AND MUST BE READ IN CONJUNCTION WITH, THIS AMENDMENT.